

FSA Youth Exchange

PUPILS' EXCHANGE PROGRAMME BETWEEN GERMANY AND SOUTH AFRICA

2016

June 2016 – July 2016 (4 weeks)
October 2016 – January 2017 (3 months)
December 2016 – January 2017 (6 weeks)
December 2016 – January 2017 (4 weeks)

THE HEADMASTER / THE HEADMISTRESS
THE TEACHER (-S) RESPONSIBLE FOR ENGLISH / AFRIKAANS / GERMAN

The FSA Youth Exchange, once again, invites learners from your school to apply to take part in the FSA pupils' exchange programme between South Africa and Germany.

German as a school subject is not compulsory to take part in our programmes.

The FSA Youth Exchange (FSA = Freundeskreis für Südafrika / Friends of South Africa) is a non-governmental, non-political and non-denominational pupils' exchange organisation, registered in South Africa, registration number: (1997 / 06295 / 23).

The 2015 top schools in the FSA programme

- | | |
|---|-------------------|
| 1. Hoërskool Menlopark, Pretoria | - 11 participants |
| 2. Eunice High School, Bloemfontein | - 10 participants |
| 3. Tsoseletso High School, Bloemfontein | - 7 participants |



To date an impressive number of 4 216 learners took part in our exchange program.

1. THE PURPOSE OF THE VISIT

1.1 Personal growth and development of each participant

The impact the stay abroad has on the intellectual and personal development of our pupils is noteworthy. The feedback and achievements of ex-participants are testimonial to this effect.

The stay enables the participant to broaden his / her views, knowledge and opinions on various cultural backgrounds. It also allows the participant to experience the different educational systems first hand.

1.2 Young Ambassadors for South Africa

Our participants have the opportunity to educate German learners by representing South Africa and sharing our cultural and national history in the form of a presentation whilst attending the German schools.

1.3 Exposure to the way of living and thinking of a different culture



2. DETAILS ABOUT THE PROGRAMME

2.1 Selected South African participants stay for one month with a German host family (June – July and December – January programmes). Participants in the six-week December – and October programme stay for six weeks and three months respectively with a German host family. They will be treated as a member of the family and not as a guest. This includes sharing the normal household duties and German cuisine.

2.2 The participant will be expected to attend a local German school to experience the difference in education systems. Although the participants in the June and December programme do not formally participate in tuition, they however, must attend school daily.

2.3 We expect the German families to continue with their normal way of living while the guest is there.

2.4 Private visits are allowed only during the last four days of stay in Germany.

2.5 There will be a tour to Switzerland at the end of the program. Seats are limited and successful participants will be invited to apply for the Switzerland tour.

3. CONDITIONS FOR PARTICIPATION

3.1 South African citizens aged 15 to 19 years, registered at a school in South Africa, may apply.

3.2 An application does not automatically mean participation. There will be a selection process. Details about the selection process will be made available later.

3.3 The selected participant must be well informed about South Africa and Germany. Good communication skills should be portrayed by the applicant.

3.4 The participant must be fluent in English. Knowledge of the German language is beneficial, but not compulsory. Applications for the three month programme without German as a school subject will be considered individually.

3.5 The selected participant will act as a 'Young Ambassador' for South Africa. The headmaster / mistress therefore needs to approve each applicant.

We will send the list of names to the school for approval.

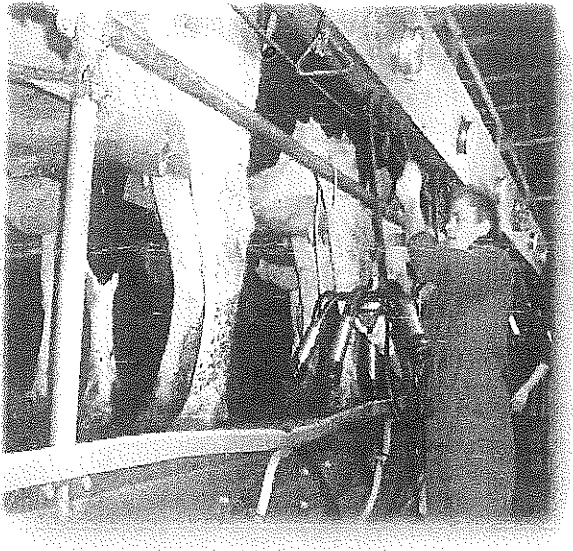
3.6 An email address is necessary as all communication is per internet.

3.7 The participant will be staying with a German family. The FSA is a cultural exchange programme and not a travel agency. We do not offer a tour to Europe. The participant is not allowed to use the family as free accommodation to enable him/her to do all his/her private trips.

3.8 It is impossible for a normal working family to entertain the guest 24 hours per day. A certain degree of independence and self-confidence is vital, especially if the family only has younger children. The applicant must be prepared to stay either in a city or in the countryside.

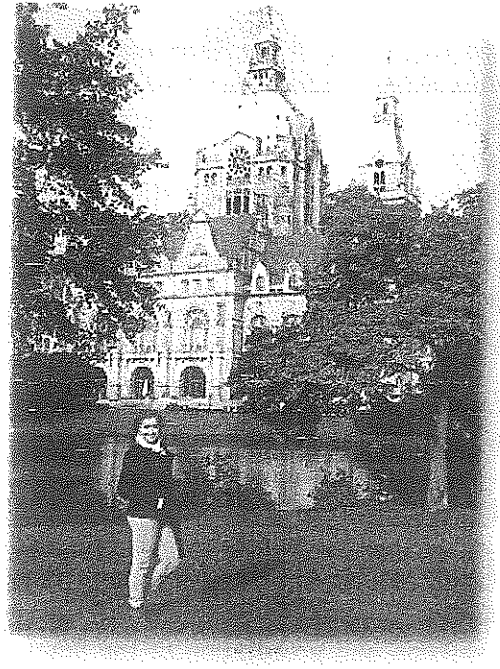
3.9 A shy person will find it hard to adapt to the German way of living. There will be trying times. The ideal candidate should be able to handle these situations without withdrawing himself/herself.

3.10 Pets in Germany receive five star treatment. Our participants need to accept and live with the pets.



3.11 The selected candidate must adapt to the German cuisine. No special meals will be provided.

3.12 Participants must have an own view about various subjects. No racism or sexism, however, will be tolerated.



3.13 An exchange programme is a reciprocal agreement. Successful participants need to host an German FSA-participant within 18 months of his/her visit to Germany for the same period of time, or provide a suitable host family. A surcharge of R2600.00 will be levied if you are not available as a host.

Grade 11 participants: Consider hosting a German FSA-participant before taking part to avoid being a host in your grade 12 year.

Grade 12 participants: Because grade 12 participants are not available as a host the year after own participation, the surcharge of R2600.00 will be levied automatically.

Three months program: it is compulsory to host a German student for three months before taking part.

4. DATES

June/July programme:

24/06/2016 – 21/07/2016*

October programme:

20/10/2016 – 11/01/2017*

December programme (six weeks):

01/12/2016 – 11/01/2017*

December programme:

14/12/2016 – 11/01/2017*

* Denotes day of departure from South Africa and arrival day back in South Africa. **Changes are possible especially for the October and December dates!**

5. THE COST

Due to the weakening of the Rand and the unstable oil price, the airline did not give a final quote. This will be available closer to the departure dates. We received estimates and therefore we need to distinguish between programme cost (fixed) and flight ticket cost (estimate).

Programme cost: R 5 000.00
(Deposit of R 800.00 included)

Flight ticket: R12 500.00
(Estimate, airport tax included)

Included

- Return flights from **Johannesburg to Frankfurt**;
- Selection and preparation of the South African participants and the organisation of the visit to Germany;
- The selection of host families in Germany and the organising of the programme in Germany.
- Meeting of the groups on arrival and departure in Frankfurt by our German colleagues.

Excluded

- **VAT** on the South African part of the programme cost (approx. R 700.00);
- The prescribed medical and personal liability insurance,
- **Domestic flights** within South Africa, if you need to fly to Johannesburg;
- **Spending money** (recommendation last year ranged between Euro 20 – 50 per week);
- Your **train ticket** from Frankfurt airport to/from your host family (the cost of a single train ticket last year ranged between Euro 29 – 115 with an average of Euro 55);
- **Bus ticket** to/from the school (last year ranged between Euro 15 – 80 per month);
- Due to the latest European legislation all applicants need to apply in person for a **Schengen (German) visa**. Cost of Schengen visa (approx. Euro 60);
- Any eventual raise in international airfare.

6. DEPOSIT AND CANCELLATION FEES

A **non-refundable** deposit of R 800.00 (VAT excl.) must accompany all applications. The deposit is refunded only to **unsuccessful** applicants. A cancellation fee of R2600.00 for the host family and a cancellation fee as determined by the airline will be levied for cancellations received after the names of the successful candidates have been released.

EFT-payments are preferred. Banking details are on the application form. Make all cheques payable to **FSA Youth Exchange**.

All cash deposits: Please ensure that the required amount appears on the FSA bank statement.

7. FINAL PAYMENT

All outstanding fees must be settled **eight** weeks before departure. Unfortunately we do not accept any credit cards.

8. CLOSING DATE

Oct. 2016 – Jan. 2017:	29 February 2016
Jun. 2016 – Jul. 2016:	29 February 2016
Dec. 2016 – Jan. 2017:	31 July 2016

9. REFERENCES

Our ex-participants and their parents are available for references and other information regarding their experiences with the FSA. Should you wish to contact them, please contact us for this information.

10. CONTACT US

FSA Youth Exchange

Postal address: P O Box 511
Naboomspruit
0560

Physical address: 32 Fourth Street
Naboomspruit
0560

Tel: 014 / 743 1081

Fax: 086 551 4374

Email: admin@fsa-youthexchange.co.za

Website: www.fsa-youthexchange.com

How many brothers: How many sisters:

In which grade are you? Do you have German as subject? If YES, since when? 20

Do you smoke (yes, no, occasionally)?

Do you have any prevailing medical condition / depression, which could cause problems during your stay in Germany? Please include allergies, for example cats, gluten, etc. (If yes, give more information. All information will be treated confidentially.)

.....

Did you receive any psychological counselling during the previous two years? (If yes, give more information. All information will be treated confidentially.)

.....

Four interests and/or hobbies that you presently have (NO WATCHING TV !):

- 1. 2.
- 3. 4.

Name and postal address of your school:

.....
.....

Email address of your school:

In which province is your school?

Name of a contact teacher at your school:

Where will you apply for your visa? (Centurion, C/Town, P/Elizabeth, Durban, Bloemfontein)

I declare that have read the FSA brochure, I do understand the conditions for participation in the FSA exchange program and that I will comply with it. I also declare that the personal information given is correct. I take note of the costs involved in taking part in the program.

.....
(Signature applicant)

.....
(Signature parent / guardian)

.....
(Date)

..... /
(Identity no of parent / guardian. Which parent?)

We will confirm each complete application by email.

Please contact us if you have not heard from us within 2 weeks after applying for the program.

Send your application to:
FSA Youth Exchange
 Fax: 086 551 4374
 Email: admin@fsa-youthexchange.co.za
 P.O. Box 511
 Naboomspruit
 0560
 Enquiries: 014 / 743 1081

Electronic payment: (Fax PoP to 086 551 4374)
 Bank: First National Bank
 Name: FSA Youth Exchange
 Account: Acc. 54 60 11 63 38 7 (Cheque account)
 Branch: 26 03 48 (Naboomspruit)